



# 6.5 OZ WESTEX DH® BUTTON FRONT SHIRT WITH REFLECTIVE TRIM

**Style: 6335C1**

**2  
CAT**

- 6.5 oz Inherent Blend Westex DH®  
48% Tencel 40% Modacrylic 12% Aramid
- Garment is certified to NFPA 2112, meets  
NFPA 70E, ASTM F-1506-02a, and CSA  
Z462
- CSA Z96 Class 1 Level FR Ensemble
- PPE CAT 2; ATPV 8.9 cal/cm2



TAILOR-STYLED COLLAR

LARGE POCKETS WITH  
COVERED SNAP CLOSURE



ADDED LENGTH FOR  
FULL COVERAGE

## STOCK SIZES

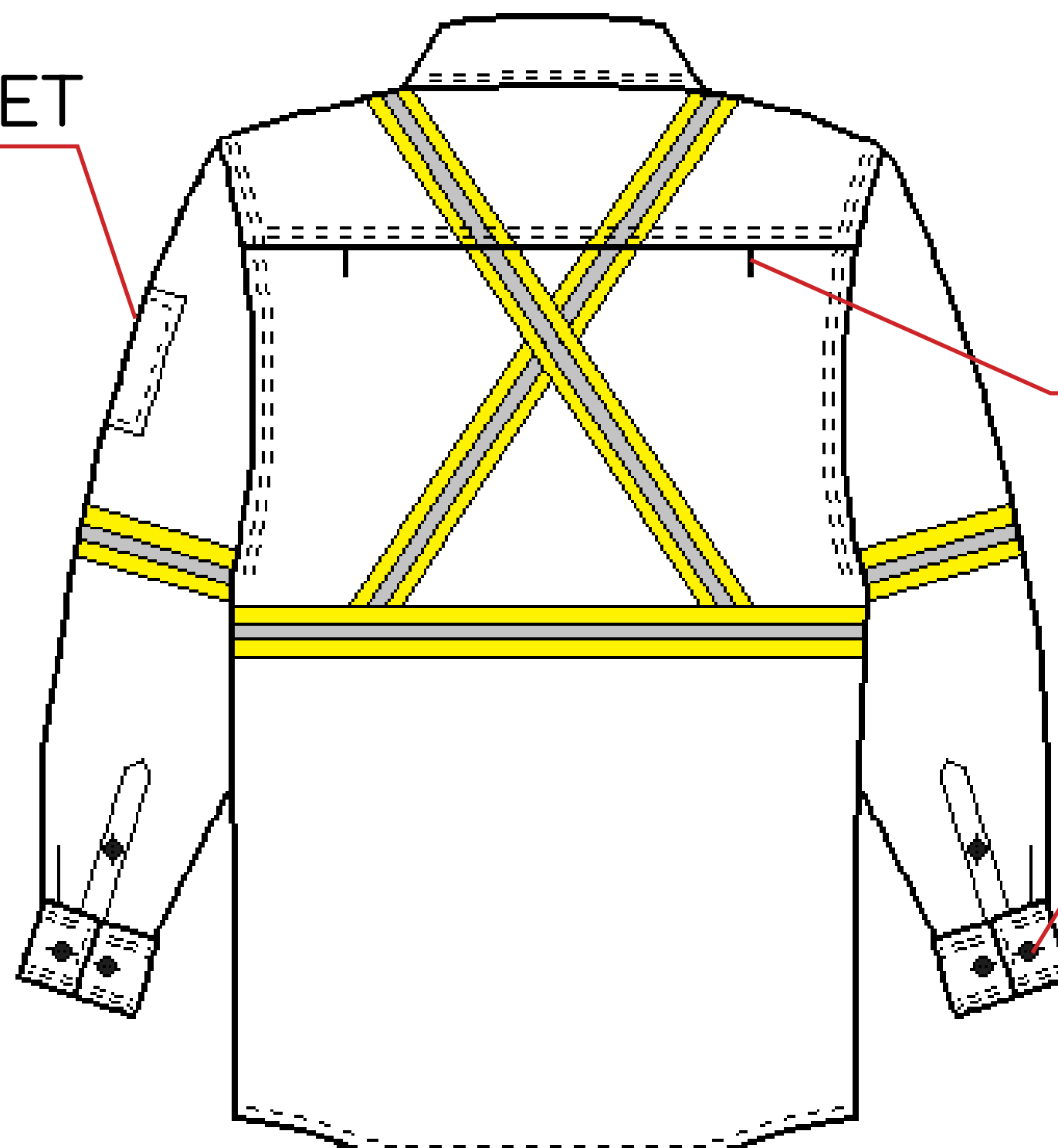
S	M	L	XL	2XL	3XL	4XL
	MT	LT	XLT	2XLT	3XLT	4XLT

## STOCK COLOURS

ROYAL  
BLUE



PEN  
POCKET



ADDED  
MOBILITY FOR  
SHOULDERS

ADJUSTABLE CUFFS  
WITH FR BUTTONS

